



Welland Park
Academy



2024 Prospectus

Welcome

Welland Park Academy prides itself on being like a family. The school motto, ‘Learning for Life,’ sits at the centre of my own educational philosophy and influences all that we do as a school. We believe in empowering our students to unlock their full potential and embark on a journey of academic excellence and personal growth. A family where everyone, both children and adults, feel happy, safe and a place where they feel proud to attend.

As Principal, I am privileged to work with a highly capable and dedicated group of teachers and support staff who are committed to fostering a culture of high expectations, challenge and care.

At Welland Park we pride ourselves on offering a broad and balanced curriculum that caters for the diverse interests and abilities of our students. From rigorous academic subjects to a rich and diverse array

of extracurricular activities, we strive to provide a well-rounded education for all. Our pastoral system ensures that every student is supported to embody our core values of Perseverance, Achievement, Respect and Kindness. Values that we strongly believe will be needed beyond Welland Park Academy.

We urge you to come and visit during the school day so that you can meet our family for yourselves.



Mr Pete Leatherland - Principal



02

About us

Welland Park Academy is an 11-16 Single Academy Trust (SAT) that serves the community within Market Harborough and South Leicestershire.

It has recently undergone significant developments on site to accommodate the growth of the school and specialist provision for GCSE. These have included a refurbished canteen, a second Sports Hall, re-development of our Astro-turf and the addition of two purpose built DT classrooms and workshop. The site therefore offers a large, diverse portfolio of lettings in the evening and at the weekend.

Our core values at the Academy centre around family. As part of the Welland Park Way, we expect all members of the school, including staff and governors to demonstrate these core values at all times, both in and out of school.



03



Curriculum

As an 11-16 Academy, we plan our curriculum as a continuum through Key Stages 3 and 4 based on the National Curriculum requisite skills and knowledge for GCSE specifications.

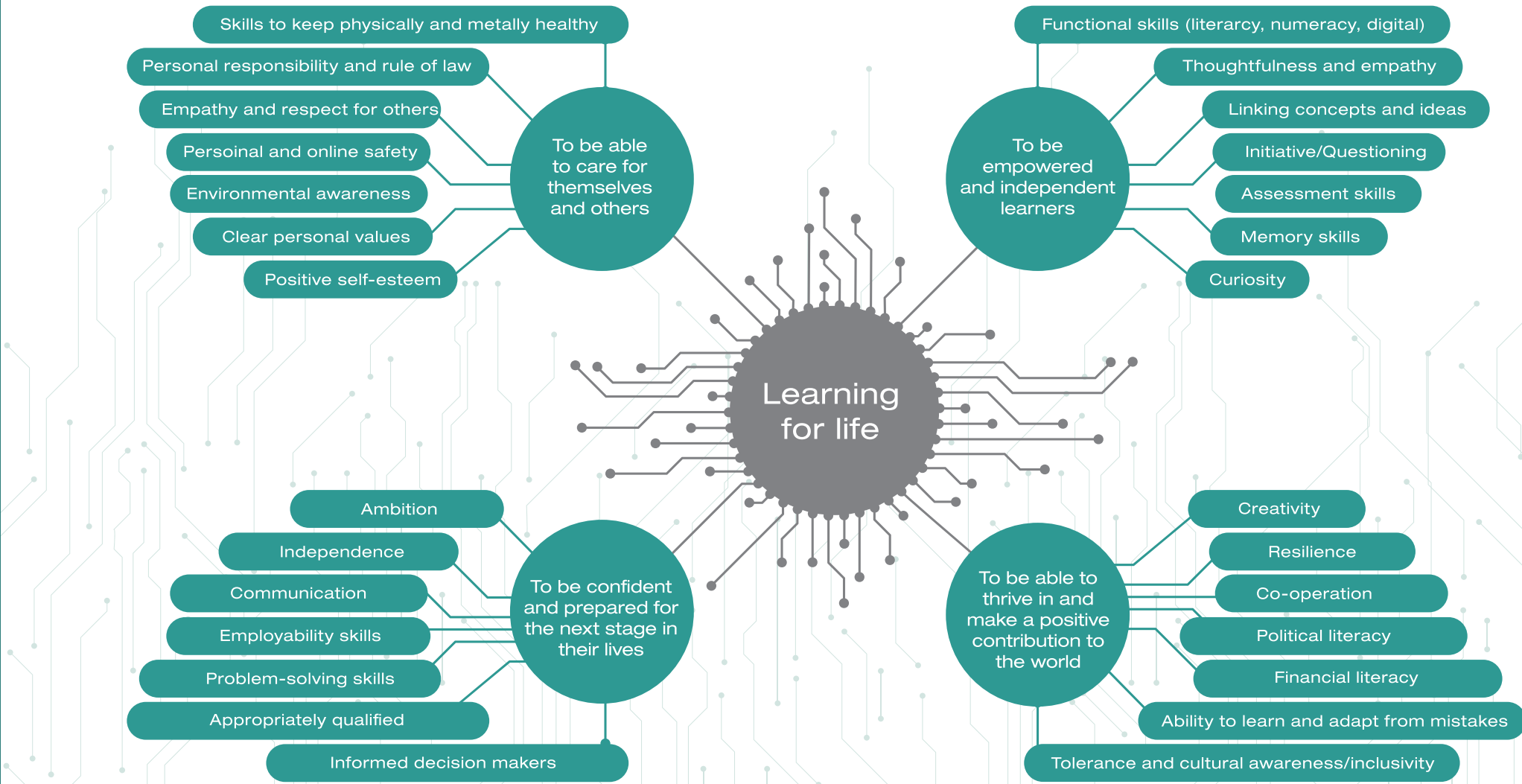
This ensures that we are fully preparing students to make outstanding progress with their final GCSE grades. Additionally, we work to ensure that students have a firm foundation for progression to the next stage of their education career.

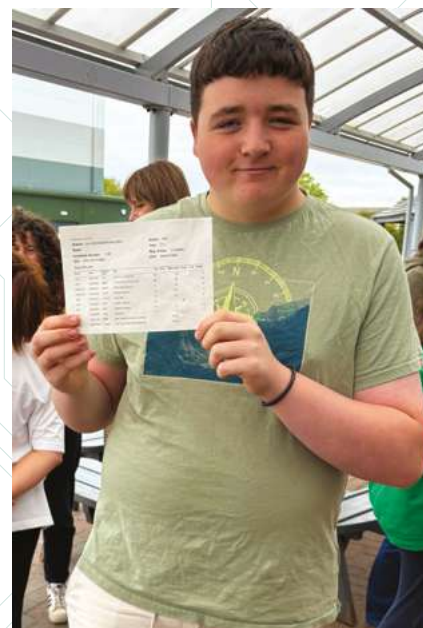
Our Key Stage 4 curriculum has been designed by the staff to meet the diverse needs of all our learners. They will be able to access many learning opportunities through lessons and our extra-curricular provision to develop their full academic, emotional and social potential.

The CORE CURRICULUM comprises of:
English Language and Literature
Maths
Triple Science or Combined Double Science
PE
Citizenship & RE

Options at KS4 include:	
Art	Media Studies
Geography	Dance
Statistics	Music
Computing	Drama
German	PE GCSE
History	Spanish
Creative iMedia	ICT

Curriculum Intent





04

Why us?

Great results, year on year

- We develop skills, knowledge and understanding to prepare students for active work and the adventures of life beyond Welland Park.
- We ensure a personalised approach to learning, where students regardless of their ability can learn effectively.
- We pride ourselves on being like a family, where our warmth, our approachability and care shines through
- Students consistently make significantly more academic progress across the range of their subjects than the national and local averages.
- Significantly more students leave WPA with pass grades (4 or higher) in both English and Maths than the national and local averages.
- Students frequently achieve top grade 9 results across the full range of the curriculum.
- For details regarding the academic performance of our students, please visit the link to the DfE page below:

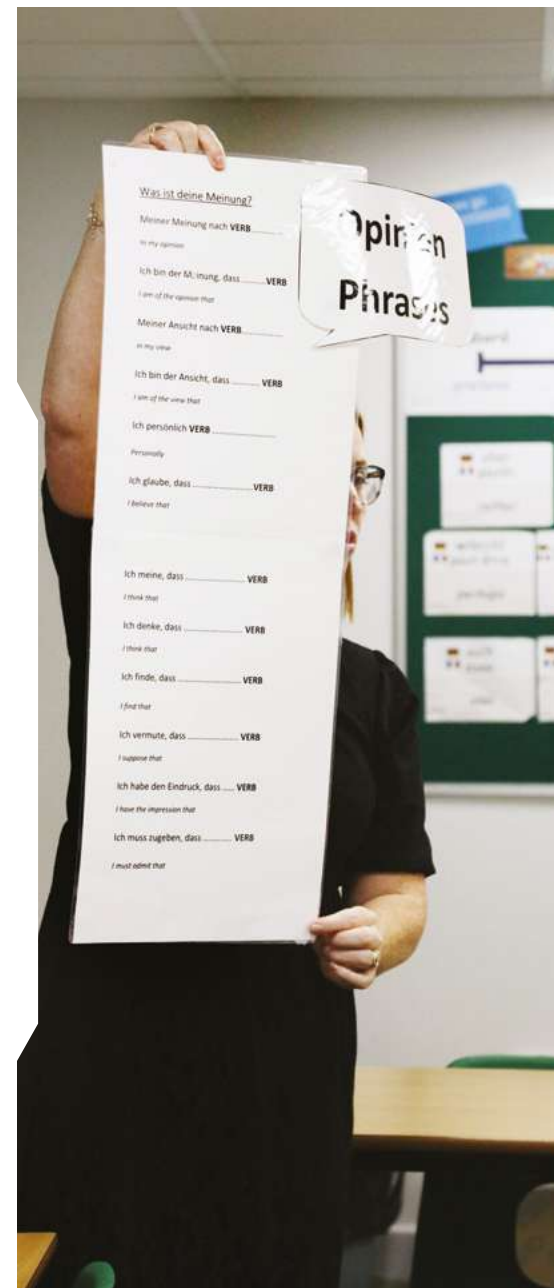
05

Pastoral Care

We pride ourselves on making a real difference to young peoples' lives as they grow into young adults by supporting both academic and emotional development. Our pastoral team is a key part to our school. Here your child will have an allocated Form Tutor, Head of Year and Pastoral Support Manager to help them navigate secondary education.

Your child's Form Tutor is the member of staff they see daily, the key person as a first point of contact for welfare & behaviour support. The Tutor will monitor your child and take a keen interest in their academic and social development. Students develop a strong sense of identity with peers in their form, wider year group and students from other years.

Through our comprehensive programme of Citizenship, we cover the important topics that our young people now face including: careers, healthy lifestyles, sex and relationships, e-safety and British values. We look to nurture a real sense of individual identity in our young people, as well as supporting their mental health and wellbeing.



06

Beyond the curriculum

Preparing students for the next stages of their lives:

Our careers curriculum is strong, it responds to the changing demands of the current employment market and has been recognised by external verifiers Matrix.

Our curriculum is also enriched through a Work Experience programme at the end of Year 10,

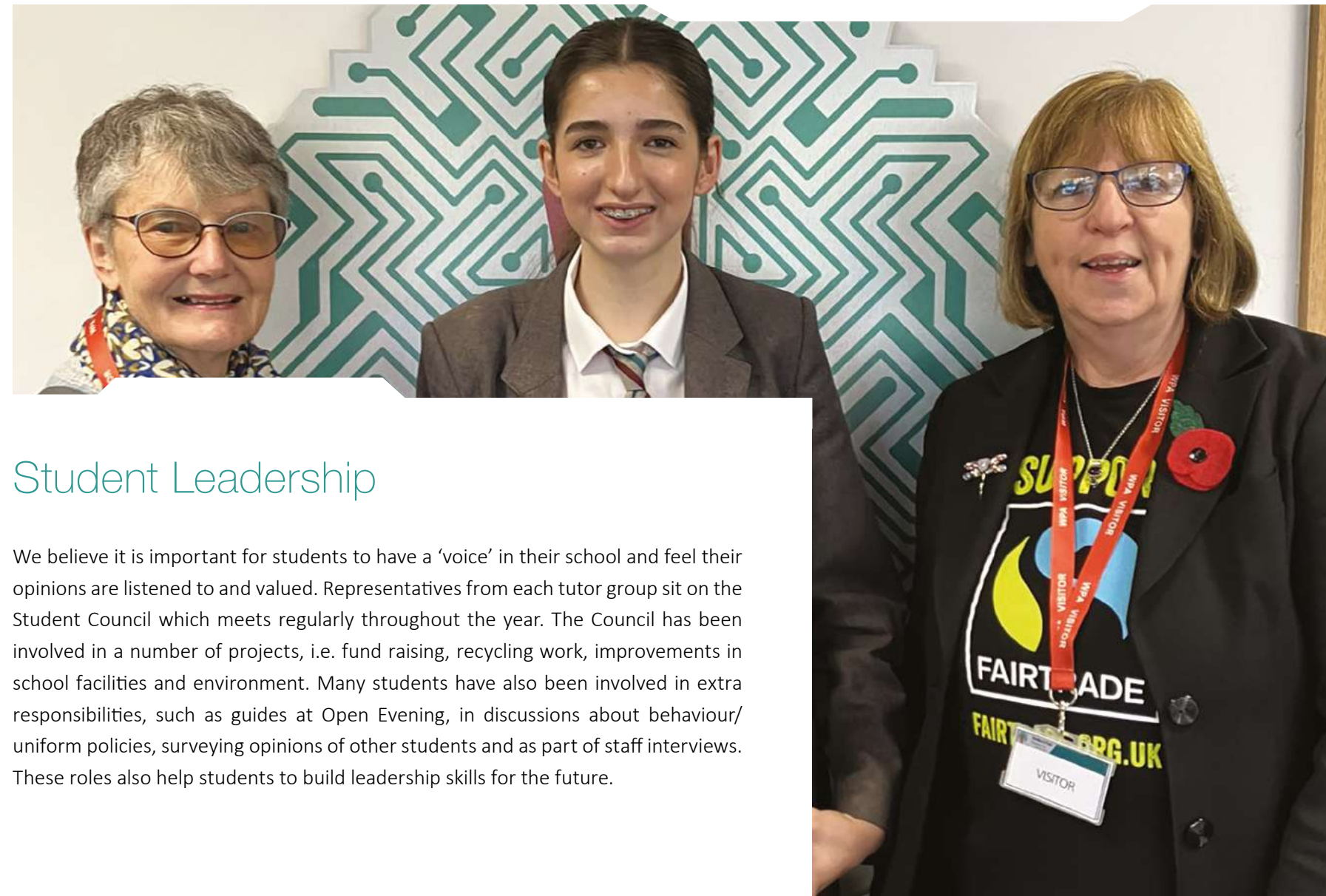
in addition to careers interviews and careers fairs to help students develop an understanding of how the skills they are learning through the curriculum can be applied in the world of work. We utilise our Enrichment programme to facilitate the development of leadership skills and resilience and strongly encourage students

to complete the National Citizen Service programme (NCS). We expect commitment from our students to secure the best possible progress. There is a rigorous programme of interventions to enhance revision and students will be expected to attend where appropriate.



Student Leadership

We believe it is important for students to have a 'voice' in their school and feel their opinions are listened to and valued. Representatives from each tutor group sit on the Student Council which meets regularly throughout the year. The Council has been involved in a number of projects, i.e. fund raising, recycling work, improvements in school facilities and environment. Many students have also been involved in extra responsibilities, such as guides at Open Evening, in discussions about behaviour/uniform policies, surveying opinions of other students and as part of staff interviews. These roles also help students to build leadership skills for the future.



07

Enrichment

Sport & Leadership

In addition to our taught PE, we compete regularly in inter-school competitions in football, rugby, netball, hockey, cross-country, tennis, table-tennis, basketball, volleyball, trampolining and athletics. To provide an opportunity for all students to experience representative competition, a wide variety of inter-house competitions are also available, together with a full range of extra-curricular clubs. Many students achieve local sporting honours and there is a very strong tradition of excellence with many students achieving County and higher honours. We have had at least one year group team in the Rugby County Cup Final for each of the last eight years, and were County Champions in 2022. Similar success has been achieved in Athletics with an age group team qualifying for the regional finals in the National Track and Field Cup every year. We also run the Duke of Edinburgh Award for students at the different levels, including Bronze and Silver.



Music & Performing Arts

We aim to provide an extensive range of activities in Performing Arts, catering for the wealth of musical or dramatic interests and a wide range of abilities. Many of our students take up opportunities for instrumental or singing lessons from one of fourteen visiting instrumental specialists. There are a number of ensembles that will rehearse on a weekly basis, enhancing the classroom curriculum experience. Examples may include our singing group 'One Voice', our Woodwind Ensemble, a boys vocal group and ensembles formed to accompany our school musical productions, such as Disney's The Little Mermaid in January 2025.

Adding to the vibrancy of this busy department, we have a number of drama rehearsals that take place amongst other things, GCSE coursework; composition work sessions; Key Stage 3 practice with room to expand for student led ensembles (Key Stage 4 rock bands for example). There are multiple performance opportunities in addition to the musical, such as plays, VASL visits and both summer and winter concerts.





Residential Trips and Visits

At Welland Park Academy, we have a passionate belief that our students should access an enriching curriculum with a significant number of opportunities for learning outside the classroom. Trips and visits include Year 7 Team Building, MFL residential trips to Paris, Barcelona, Seville and Germany, a ski trip, a sports tour to Holland in addition to visits to museums, theatres, art galleries and Science Museums. Our students have visited Berlin, CERN and Borneo, with a trip to Costa Rica that went out in the summer of 2024. We have a full trips calendar available on the website.



We have a passionate belief that our students should access an enriching curriculum with a significant number of opportunities for learning outside the classroom.



08

The Welland Park Way

Welland Park prides itself on being like a family. Therefore, we have four core values at its heart, similar to those in any family. We want our students to persevere when things are tough, we want our students to achieve, we want our students to respect themselves and others and finally we want our students to show kindness in whatever they do. Students in KS3 undertake a student leadership and character education programme, called the Welland Park Way, which is based around our core values. These activities are completed in school, during extra-curricular activities or outside of school. Students will develop skills, qualities and experiences that are essential for their future. Students in KS4 are expected and encouraged to demonstrate these core values in their daily lives through their revision, extracurricular activities and preparation for their GCSE examinations and life beyond WPA.

In The Welland Park Family,

We Respect

Persevere

Achieve... *with Kindness*



Rewards

Students can accrue achievement points for good deeds and good work. Our achievement points are linked to the core values and are graduated from A1s for basic rewards to A3s for exceptional work or contributions. This scheme reinforces self-discipline and positive attitudes to learning and support of fellow students as well as rewarding the positive character traits that help students succeed in school and in later life.



WAS

promoting
emotional
wellbeing
and positive
mental
health

Well-being & Anti-bullying

We are proud holders of the Well-being At School award, recognising the extensive range of support provided for our students and staff. Rare cases of bullying are dealt with seriously and the Academy has an established disciplinary structure which, depending on the nature of the problem, will be used. Students are given clear advice on what constitutes bullying and what they should do if they witness bullying or are subject to it. They are also made aware that bullying behaviour will not be tolerated in the Academy. Parents are always encouraged to contact the Academy if they suspect bullying. We are committed to minimising the opportunities for unkind behaviour and bullying and we aim to deal with it quickly and firmly. We secured the Gold Beyond Bullying award for our determination to address bullying effectively.

Emotional health and wellbeing



09

Raising Achievement

Our staff provide challenge and support to all students to ensure they make excellent progress. This is reviewed termly at Key Stage 3 and more regularly at GCSE and a variety of supportive interventions applied where appropriate.

More and Very Able

We have a specific member of staff whose role it is to identify and provide a range of opportunities to allow able, very able and talented students to develop their potential across all curriculum areas. These consist of various groups meeting regularly, one-off activities and specific extension work within each subject area.



Homework

Homework is an important part of learning at Welland Park Academy. It gives students the opportunity to think about the work they have done in school; it helps to develop the skills of self-discipline, organisation and learning; it is part of the partnership between home and school.

Homework will be set regularly in most subjects using Edulink. Students and parents will be given log in details at the start of the year so that they can see details of all homework set and any resources needed to complete it. They can also download the app version to their phone or tablet to provide a clear list of all tasks to be completed.



Welland Park Academy Debating

A very successful Debate club assemble weekly to debate various issues, using the 'British Parliamentary' format. It does not matter if you have any experience, as full training is given to new members. We have members from all year groups who participate, and we compete successfully in local, national and international competitions, being crowned the county Debate Champions in 2023 and again in 2024.



Reading

We believe that reading and literacy are the cornerstone of learning for life. We include reading time and reading clubs designed to empower students with the skills, knowledge, and passion for reading that will not only enhance their academic achievements but also equip them for a lifetime of continuous learning. We are committed to fostering a love of reading, developing subject-specific vocabulary, and implementing guided reading strategies across all year groups.

10

Learning support

Opening Education to All

Through Quality First Teaching and bespoke provision, we aim to provide a fully inclusive environment to enable all of our students to reach their potential academically, socially and emotionally. We have a nurturing and dedicated learning support team who deliver support through a variety of ways, such as small group interventions, additional support in lessons, bespoke learning interventions and personalised provision. All of the students on the SEND register have a key worker assigned to them. The SEND team work closely with the Pastoral team.

All students on the SEND register have a student passport and SEND plan. Both are closely monitored and updated termly, with appropriate targets set and reviewed by key workers and staff, the aim being to create a clear focus for the students in manageable chunks. Students will have the chance to meet with their key worker on a regular basis. The role of a key worker is to provide both academic and emotional support, liaising with teaching staff and home to create a strong dynamic enabling students and parents alike to voice any concerns they may have. Our goal is to help each student to develop the independence and confidence needed to have a successful and enjoyable experience at Welland Park Academy.

11

Our facilities

In recent years we have invested significantly in our site, with over £3 million spent in upgrading our sports facilities, dining areas and design technology labs. We want to offer our students the very best environments in which to thrive and succeed.



12

Start and finish

Youngsters can start their journey by participating in our very successful Summer Camp. This is a wonderful opportunity for your child to get to know staff and students in the year group. If your child has any concerns regarding their new school this will help to alleviate them and provide them with a real boost academically before they make this important transition.

We constantly work to develop Numeracy and Literacy, but this is done in a fun and creative way so that it doesn't feel like a 'normal school day'. The emphasis of the week is allaying fears, meeting new friends and building relationships.

The culmination of your child's journey at Welland Park Academy is the Year 11 Prom. This is a fabulous evening where students can celebrate the end of their GCSE's and the start of their Summer holidays before moving on to their chosen Post 16 option. Year 11 students fundraise throughout their final year and, in conjunction with a few staff members, organise the event themselves.



13

Parental Partnership

At Welland Park Academy, we believe the best way to support young people to be happy and achieve their best is through a strong partnership between school and home.

Our experienced and dedicated staff are highly committed to developing lasting relationships and are always on hand to talk to parents and carers. We strongly believe that when the home, the child and the school work in collaboration together, then the child will always be successful.

The parent portal on Edulink gives live access to information on your child's attendance, progress, rewards and conduct in addition to details of home learning assignments. Regular reports home and scheduled Progress Evenings mean that parents and carers will always know how their child is progressing.



14

Facilities and lettings

The Academy has a wide range of facilities that are available to hire; the areas can accommodate small or large classes or events. They include: Octagonal Hall with retractable raised seating for 300 people, Sports Halls, astro pitch, specialist and standard classrooms.

Please contact Mrs N. Burgess on tel: 01858 464795 or email:

adminoffice@wellandparkacademy.com for further details.





Welland Park Academy

Learning For Life

Principal:

Pete Leatherland

Vice Principal:

Matt Jerred

Assistant Principals:

Caroline Bowden, Emma Ferreri,
Cheryl Gerald, Danielle Pendell,
Martin Towers and Sam Askham
(Associate)

Welland Park Road, Market Harborough
Leicestershire LE16 9DR

Tel: 01858 464795

Email: adminoffice@wellandparkacademy.com
wellandparkacademy.co.uk

