

About Welland Park Academy

The Academy

Welland Park Academy is an 11-16 Single Academy Trust (SAT) that serves the community within Market Harborough and South Leicestershire. It has recently undergone significant developments on site to accommodate the growth of the school and specialist provision for GCSE. These have included building a brand-new canteen, a second Sports Hall, re-development of our Astro-turf and the addition of two purpose build DT classrooms and workshop. The site therefore offers a large, diverse portfolio of lettings in the evening and at the weekend.

Our core values at the Academy centre around family. As part of the Welland Park Way, we expect all members of the school, including staff and governors to demonstrate these core values at all times, both in and out of school.

In The Welland Park Family,

We Respect

Persevere

Achieve...with kindness



The Academy was last inspected in July 2019, for a graded inspection, and was judged to be good in all areas. We believe that Welland Park Academy continues to be a good school. The latest validated data, 2023, saw the school achieve a progress 8 of positive 0.3, which is significantly higher than any of the local schools in the area and is significantly higher than the Local Authority average which was -0.09.

The PAN is now 210, with a legacy PAN of 180 in Years 9, 10 and 11. All year groups are oversubscribed.

This post is an opportunity for a new leader to enhance an existing team and realise these fabulous new facilities for all members of our learning community.

The Students

We are a fully comprehensive Academy with nearly 1000 fabulous young people. We have a smaller than average number of disadvantaged students and their progress exceeds that of non-disadvantaged nationally.

We have worked to ensure that staff are aware of the learning barriers for disadvantaged groups and exercise adaptive teaching.

Our students are drawn from many local feeder schools and these are not exclusive to Market Harborough.

The KS3 transition team lead a well-established and rigorous induction process. Students have a number of opportunities to develop their cultural capital and leadership skills at school. We know the importance and value to our students of trips and visits outside of the local area, as many do not travel far beyond the borough boundaries. They are essential for our students to be able to experience the wider world, develop knowledge and skills and meet our curriculum intent.

Trips Map

Year 11	Theatre trip 1 Day trip	Hunstanton <i>Geography students</i> Day trip	Roslyn Park <i>Selected students</i> 2 days	Theatre trip 2 Day trip	Camps International <i>Biennial trip</i> 4 week expedition	 Welland Park Academy				
	English dept Approx £25	Humanities dept Approx £30 - £40	PE dept Approx £75 (female) £100 (male)	English dept Approx £25	Miss Gray Approx £4,800 <i>Fundraising support provided</i>					
Year 10	Paris <i>French students</i> 5 days	German exchange <i>German students</i> 7 days	Barcelona <i>Spanish students</i> 5 days	Berlin trip <i>History students</i> 5 days	Roslyn Park <i>Selected students</i> 2 days	Iceland fieldtrip <i>Biennial trip</i> 4 days	Camps International <i>Biennial trip</i> 4 week expedition	Oxford Art and Textiles trip Fine art and textiles students Day trip	Sports Tour <i>Biennial trip</i> 5 days	Rewards trip <i>Selected students</i> Day trip
	MFL department Approx £550	MFL department Approx £550	MFL department Approx £700	Humanities dept Approx £650 - £675	PE dept Approx £75 (female) £100 (male)	Humanities dept Approx £900 - £1000	Miss Gray Approx £4,800 <i>Fundraising support provided</i>	Design dept Approx £25	PE department Approx £110	Pastoral team Approx £40
Year 9	Ski trip 5 days	CERN 5 days	Warner Bros. Studio Day trip	Battlefields trip – France & Belgium 3 days	Iceland fieldtrip <i>Biennial trip</i> 4 days	Netball residential 2 days	Roslyn Park <i>Selected students</i> 2 days	Sports Tour – Holland <i>Biennial trip</i> 5 days	Rewards trip <i>Selected students</i> Day trip	
	PE dept Approx £1150	Science dept Approx £850	Design Technology Approx £40	Humanities dept Approx £270 - £290	Humanities dept Approx £900 - £1000	PE dept Approx £185	PE dept Approx £75 (female) £100 (male)	PE department Approx £560	Pastoral team Approx £40	
Year 8	Opal Coast <i>French students</i> 5 days	Rhineland <i>German Students</i> 5 days	Seville <i>Spanish students</i> 5 days	Hunstanton Day trip	Netball residential 2 days	Roslyn Park 2 days	Sports Tour - Holland <i>Biennial trip</i> 5 days	Rewards trip <i>Selected students</i> Day trip		
	MFL dept Approx £500	MFL dept Approx £550	MFL dept Approx £770	Humanities dept Approx £30 - £40	PE dept Approx £185	PE dept Approx £75 (female) £100 (male)	PE department Approx £560	Pastoral team Approx £40		
Year 7	Warner Bros studio. Day trip	Bosworth Battlefield Day trip	Team building off-site Day trip	Roslyn Park <i>Selected students</i> 2 days	Rewards trip <i>Selected students</i> Day trip	* Trips will be discounted by 50% for PP students. *All families can apply for funding for academic trips via https://www.hwsncharity.org.uk/				
	English dept Approx £40	Humanities dept Approx £20	Pastoral department Approx £30 - £40	PE dept Approx £75 (female) £100 (male)	Pastoral team Approx £40					

Learning for Life: Our Curriculum Rationale

The Curriculum

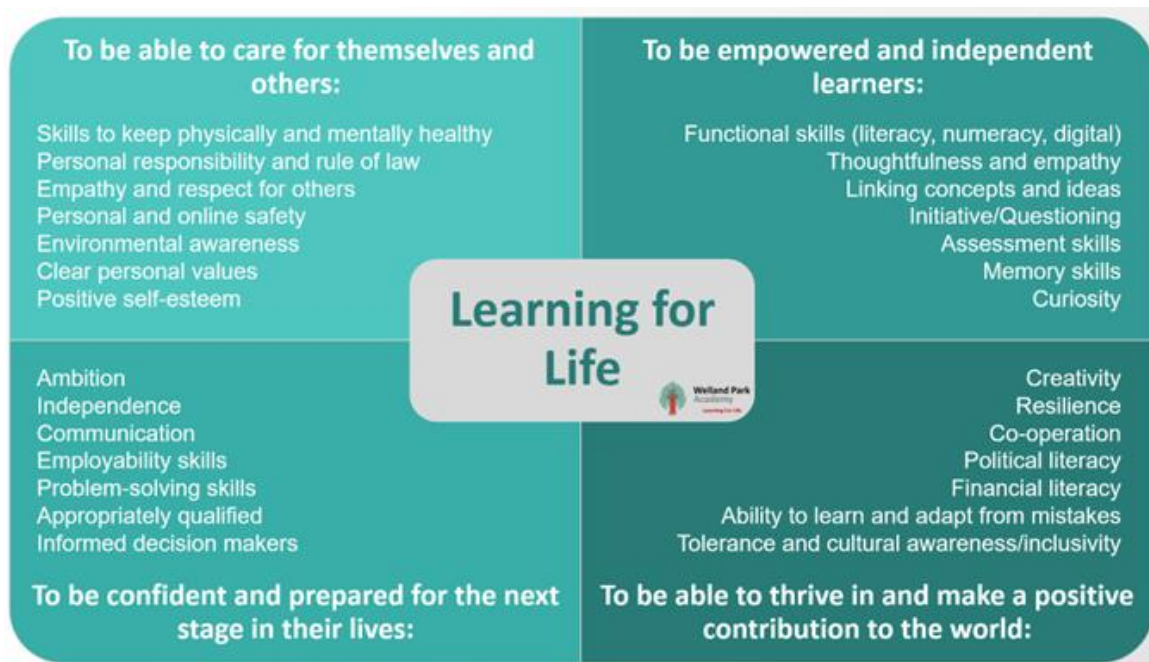
As an 11-16 Academy, we plan our curriculum as a continuum through Key Stages 3 and 4 based on the National Curriculum requisite skills and knowledge for GCSE specifications. This ensures that we are fully preparing students to make outstanding progress with their final GCSE grades. Additionally, we work to ensure that students have a firm foundation for progression to the next stage of their education career.

Our Key Stage 4 curriculum has been designed by the staff to meet the diverse needs of all our learners. They will be able to access many learning opportunities through lessons and our extra-curricular provision to develop their full academic, emotional and social potential.

Curriculum Design Principles:

Our curriculum intent is focused on the following for students:

- **To be able to care for themselves and others;**
- **To be empowered and independent learners**
- **To be confident and prepared for the next stage in their lives**
- **To be able to thrive in and make a positive contribution to the world.**



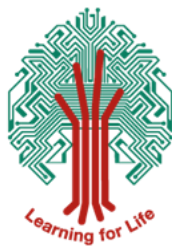
Preparing students for the next stages of their lives:

Our CAIEG curriculum is strong, it responds to the changing demands of the current employment market and has been recognised by external verifiers Matrix.

Our curriculum is also enriched through a Work Experience programme at the end of Year 10, in addition to careers interviews and careers fairs to help students develop an understanding of how the skills they are learning through the curriculum can be applied in the world of work. We utilise our Enrichment programme to facilitate the development of leadership skills and resilience and strongly encourage students to complete the National Citizen Service programme (NCS). We expect commitment from our students to secure the best possible progress. There is a rigorous programme of interventions to enhance revision and students will be expected to attend where appropriate.

The Staff

We have a fabulous, highly motivated and enthusiastic staff. There is an emphasis on teamwork and colleagues collaborate and plan together. Curriculum leaders and Pastoral leaders meet in their forums on a regular basis supported by a Senior Leadership Team. Relationships are very good amongst staff and with students.



The teaching staff are a highly skilled group of specialist teachers. They are passionate about their subject area and outcomes for young people. They proactively seek to develop their pedagogy. There is a thriving Teaching and Learning working party who share ideas, reflect on shared practice and strive for continuous improvement. Many of the staff have completed Masters degrees or National Professional Qualifications as part of their ambition to enhance quality teaching at this school.

The teaching staff are organised in curriculum teams, each with a co-ordinator and some with a second in department to lead each curriculum area.

The Senior Leadership Team is a well-established, cohesive group of professionals with great expertise. The roles have been developed to optimise outcomes and ensure the most efficient operations for this dynamic school. This highly capable team welcome the opportunity to work with a new leader to drive the next stage in the Academy's development.

The Extras

Beyond lessons, clubs, trips and additional activities are abundant in a wide range of areas, both for fun, additional challenge and extra learning. Staff give their time freely to provide these opportunities.

The many trips and visits complement the curriculum, from local theatre trips to Borneo, the French Alps to places of worship amongst others.

In recent years the Academy has secured the following awards:

The International School Award
Gold Career Mark
Gold Beyond Bullying Award
Wellbeing at School Award
Matrix Careers Award

Please use our website to view the many extra-curricular clubs on offer.