

## MESSAGE FROM THE PRINCIPAL

Dear Parents and Carers

What another amazing week here at WPA! On Wednesday we had the pleasure of hosting VASL – Voluntary Action South Leicestershire with an event to combat loneliness in the over 60s. It was a fantastic event organised by Mrs Burgess, with a number of our Year 10 and 11 students hosting an afternoon of tea, cake, music and chatter. The students were truly amazing supporting our visitors, they genuinely enjoyed spending time with the over 60s and I think fun was had by all!

We had a special visitor on site this Friday, the Big Man a.k.a Santa, stopped by Welland Park Academy on his way to the Pre-School next door. He was joined by his two elves, Buddy and Bubbles. The pre-schoolers were very impressed to see Santa Claus, and enjoyed having time with the Big Man himself in the makeshift Grotto. A big thanks to Mo and Chanelle from Year 11, for helping this afternoon.

I am very pleased to announce that we have been accredited with the Matrix Careers Education Information and Guidance (CEIAG) award. This was a gruelling process involving a large number of students, staff and governors and it's fantastic news that we have been awarded this. It is largely down to the sterling work our careers team get up to here at Welland Park Academy, so a special thanks must go to Mrs Hix and Mr Askham for all their hard work.

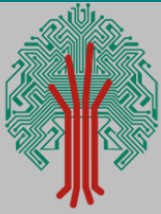
Thursday was our Christmas Jumper Day. It was lovely to see so many staff and students take part in this event to raise money for Save The Children. So, thank you to all that took part and contributed. We raised £316.00. The Christmas theme continues, I would like to remind parents that Christmas Dinner Days are now out, Tuesday 19<sup>th</sup> December for KS3 and Wednesday 20<sup>th</sup> December for KS4. Finally, I would like to remind all parents and carers, the last day of term will be a non-uniform day on Friday 22<sup>nd</sup> December with the school closing at 12.20pm.

I hope that you all have a fantastic weekend.

Yours faithfully

Pete Leatherland





**HOT CHOCOLATE BREAK BAR**

EVERY TUESDAY  
IN DECEMBER  
10.05 - 10.20AM

**£1 DRINK ONLY/£1.50 DRINK & SWEET TREAT**  
SERVED FROM THE BANDSTAND BY THE DINING HALL ENTRANCE

Made with Prepaid@Well.com

**FUNDRAISING—PROM 2024**

Our first Hot Chocolate Break Bar went fantastically well with us serving nearly 10% of the student body during the morning break.

We will be back next Tuesday to do it all over again.

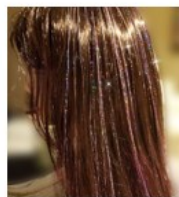
We are hopefully going to be announcing some big news in the next few weeks so please keep your eyes on the newsletter and social media!

Thank you to everyone who supports our fundraising . Prom 2024 will be here before we know it.

**Nicki Burgess—Prom Chair**



Add some Christmas  
**sparkle**  
with hair glitters



A £2 donation to Our Sensory Garden fundraiser is how much the glitters will cost

Come to learning support ELSA room during Lunchtimes between the 18<sup>th</sup> and 21<sup>st</sup> December for your sparkles! Staff and students welcome

A little about our Sensory garden vision:

The team in learning support and the school council are aiming to build a sensory garden at the base of learning support. Miss ~~Stacey~~ and a team of students have been working hard to tidy it up and make it look as pretty as we can with the resources we have. We are aiming to eventually have a sensory summerhouse out there and lots of other sensory areas within the garden (including colour, smell and touch this will be using different flowers, but also different texture materials). Our aim is to have the garden to be a peaceful and safe place for students to go to take time out and relax. The sensory summerhouse will also be used for ELSA sessions and interventions.

With the help of staff, ~~students~~ and parents we are hoping this vision can come to life.

If anyone has any plants, garden tools, wiggly or other garden things they would like to donate we will be happy to take them off your hands.

**Welland Park Academy Dining Rooms Christmas Lunch**

**Tuesday 19<sup>th</sup> December – KS3**  
**Wednesday 20<sup>th</sup> December – KS4**  
**£4.00**

**Glazed Roast Turkey**  
**Sage & Onion stuffing**  
**Sticky Pigs**  
**Roasties**  
**Fresh vegetables & gravy**  
**Or**  
**Butternut & mushroom wellington**

**Xmas Pudding Rice Krispie ball for dessert**

Welland Park Academy Learning For Life



## Welland Park Academy Lunch & Deli Menu Week commencing 11th December 2023

Week 1	Monday	Tuesday	Wednesday	Thursday	Friday
Concept	American	Asian	Best of British	Authentic Italian	Fish Friday
Option 1	American Cheeseburger with burger sauce	Chinese Hot Chicken Wrap	Roast Pork & Stuffing	Lasagne	Battered fish
Option 2	Classic Mac n Cheese with Crispy onions	Sweet Thai Chilli Stir Fry	Cauliflower Cheese Bake	Leek & Mushroom Risotto	Vegetable & bean Burger
Sides	Wedges Slaw	Rice Sweetcorn	Smokey Roasties Honey Carrots	Garlic bread Green Salad	Chips & Beans
Authentic Italian	Authentic Italian Pizza and Pasta Bar				
Hot Deli	Cheese & Tomato Panini Jacket & Topping	Tuna Melt Panini Jacket & Topping	Cheese & Onion Panini Jacket & Topping	Roasted Veg Panini Jacket & Topping	Cheese Panini Jacket & Topping

## EVERYONE ACTIVE HERE FOR EVERYONE AN OVERVIEW



Everyone Active at Harborough Leisure Centre are offering free gym and swim memberships including up to four nutritious meals for 11-16 year olds in receipt of free school meals. This offer is for anyone that will receive a voucher from Leicestershire County Council and the offer will be available from 2<sup>nd</sup> – 5<sup>th</sup> January on a first come first served basis. So get in touch with the leisure centre by following the link provided as a supplier as soon as your voucher comes through.



## Welland Park Academy PE

Sport	Team	Opposition	Venue	Teacher I/C	Transport	Meet Time	Start Time	Return Time
<b>Monday 11 Dec 2023</b>								
Basketball	Boys-U14A	Lutterworth College	H	Miss C Gray		15:20	15:30	17:00
Basketball	Boys-U13A	Lutterworth College	H	Miss C Gray		15:20	15:30	17:00
Rugby Union	Boys-U13A	Oakham School	A	Mr Button	Minibus	13:15	14:30	16:45
Rugby Union	Boys-U12A	Oakham School	A	Mr Button	Minibus	13:15	14:30	16:45

<b>Tuesday 12 Dec 2023</b>								
Basketball	Boys-U12A	Year 7 South Leicestershire Tournament	H	Miss C Gray		15:20	15:45	17:15

<b>Wednesday 13 Dec 2023</b>								
Football	Boys-U13A	Thomas Estley Community College	A	Mr Woodward	Minibus	13:15	14:20	17:00

<b>Thursday 14 Dec 2023</b>								
Basketball	Girls-U12A	Year 7 South Leicestershire Tournament	N	Miss C Gray	Minibus	15:00	16:00	18:00

<b>Friday 15 Dec 2023</b>								
Rugby Union	Boys-U15A	Lutterworth College	N	Mr Button	Minibus	13:15	14:30	16:30

<b>Monday 11 Dec 2023</b>								
12:25-13:00	Badminton	<a href="#">KS3 Boys</a>	Sports Hall 2	Mr Blades*				
15:20-16:20	Football	<a href="#">Girls-U14A</a>	Field	Miss Chapman*				

<b>Tuesday 12 Dec 2023</b>								
12:25-13:00	Table Tennis	<a href="#">U16 Table Tennis</a>	Sports Hall 2	Mr Blades*				
12:25-13:00	Table Tennis	<a href="#">U13 Table Tennis</a>	Sports Hall 2	Mr Blades*				
15:20-16:15	Football	<a href="#">Boys-U13A</a>	Field	Mr Woodward*				
15:25-16:25	Hockey	<a href="#">Girls-U12A</a>	Astro	Mrs C Burdon*				

<b>Wednesday 13 Dec 2023</b>								
12:25-13:00	Rugby Union	<a href="#">Boys-U15A</a>	Field	Mr Button/Mr Blades*				
12:25-13:00	Rugby Union	<a href="#">Boys-U14A</a>	Field	Mr Button*				
15:20-16:20	Football	<a href="#">Girls-U12A</a>	Field	Miss Chapman*				

<b>Thursday 14 Dec 2023</b>								
12:25-13:00	Badminton	<a href="#">KS4 Boys</a>	Sports Hall 2	Mr Button*				
12:30-13:00	Badminton	<a href="#">Girls-U14A</a>	Sports Hall 1	Mrs C Burdon*				
15:20-16:30	Rugby Union	<a href="#">Boys-U13A</a>	Field	Mr Button*				
15:20-16:30	Rugby Union	<a href="#">Boys-U12A</a>	Field	Mr Button*				

<b>Friday 15 Dec 2023</b>								
12:25-13:00	Football	<a href="#">Boys-U14A</a>	Field	Mr Button*				
12:30-13:00	Badminton	<a href="#">Girls-U16A</a>	SportsHall 2	Mrs C Burdon*				
15:25-16:30	Hockey	<a href="#">Girls-U16A</a>	Astro	Mrs C Burdon*				
15:25-16:30	Hockey	<a href="#">Girls-U15A</a>	Astro	Mrs C Burdon*				

Basketball						
Time/Date	Team	Venue	Opponent	Result	Type	Report
16:35 Mon 04 Dec 23	Boys-U13A	Home	Robert Smyth Academy	Draw : 8 - 8	Jr. NBA	
16:10 Mon 04 Dec 23	Boys-U13A	Home	Lincroft Academy	Won : 14 - 4	Jr. NBA	
15:45 Mon 04 Dec 23	Boys-U13A	Home	Brook Mead Academy	Lost : 3 - 9	Jr. NBA	
15:45 Tue 05 Dec 23	Boys-U14A	Home	Brockington College	Lost : 4 - 14	League	
15:45 Tue 05 Dec 23	Boys-U14A	Home	Thomas Estley Community College	Lost : 0 - 6	League	
15:45 Wed 06 Dec 23	Boys-U16A	Home	The Kibworth School	Won : 46 - 12	League	
15:45 Wed 06 Dec 23	Boys-U15A	Home	The Kibworth School	Won : 20 - 0	League	KMA forfeited the game.
16:00 Thu 07 Dec 23	Girls-U13A	Neutral	Year 8 South Leicestershire Tournament	2 <sup>nd</sup> Overall	Tournament	

Football						
Time/Date	Team	Venue	Opponent	Result	Type	Report
14:30 Wed 06 Dec 23	Boys-U12A	Away	Lutterworth High School	Lost : 2 - 6	Area Play Off	Goals: BAILEY, HUGHES MVP(s) Stanley BAILEY

Hockey						
Time/Date	Team	Venue	Opponent	Result	Type	Report
15:45 Tue 05 Dec 23	Girls-U15A	Home	Bourne Academy	Lost : 2-3		Goals: PARKER(2) MVP(s) Danika SWINNY
15:45 Tue 05 Dec 23	Girls-U13A	Home	Bourne Academy	Lost : 1-5		

Rugby Union						
Time/Date	Team	Venue	Opponent	Result	Type	Report
14:30 Tue 05 Dec 23	Boys-U16A	Away	Oakham School Boys-U16B	Draw : 19 - 19	Friendly	Tries: BAVERSTOCK, OBAZEE(2), CHESTER(2) Cons: OBAZEE(2) MVP(s) Harry MANTON
14:30 Wed 06 Dec 23	Boys-U13A	Away	Leicester Grammar School Trust	Won : 30 - 10	Friendly	Tries: UNWIN, TRIVEDI(3), RUSLING, SHARP MVP(s) Hari TRIVEDI Arthur UNWIN
14:45 Thu 07 Dec 23	Boys-U14A	Away	Leicester Grammar School Trust	Lost : 7 - 45	Friendly	Tries: CHESTER MVP(s) Gio MARABELLA Jacob WIGGLESWORTH



**WELLAND PARK ACADEMY  
REVERSE ADVENT EVENT  
THE TWELVE DAYS OF CHRISTMAS**

Reverse Advent sees us giving something, rather than receiving something, through the days of December. This year we are asking for any donations of food and health products which we can then collect and pass onto the Jubilee Foodbank to help them over the Christmas holidays. We will begin collecting on Monday 4<sup>th</sup> December and then for the next twelve school days. Anything you can give, will be gratefully received and passed on but this is a suggested list of requests:

**MONDAY 4<sup>TH</sup> DECEMBER – DRIED POTATO (EG SMASH)**  
**TUESDAY 5<sup>TH</sup> DECEMBER – TINNED CUSTARD**  
**WEDNESDAY 6<sup>TH</sup> DECEMBER – TINNED POTATOES OR CARROTS**  
**THURSDAY 7<sup>TH</sup> DECEMBER – BOX OF CEREAL**  
**FRIDAY 8<sup>TH</sup> DECEMBER – JAR OF CURRY SAUCE**  
**MONDAY 11<sup>TH</sup> DECEMBER – PACKET OF BISCUITS**  
**TUESDAY 12<sup>TH</sup> DECEMBER – BOTTLE OF CORDIAL / SQUASH**  
**WEDNESDAY 13<sup>TH</sup> DECEMBER – PACKET OF RICE**  
**THURSDAY 14<sup>TH</sup> DECEMBER – CHOCOLATE BARS**  
**FRIDAY 15<sup>TH</sup> DECEMBER – SHOWER GEL**  
**MONDAY 18<sup>TH</sup> DECEMBER – PORRIDGE OATS**  
**TUESDAY 19<sup>TH</sup> DECEMBER – TINNED FRUIT**

For further details of suggested food donations, please visit the Jubilee Food Bank website at [www.jubileefoodbankmh.uk/shopping-list](http://www.jubileefoodbankmh.uk/shopping-list)



**DO YOU HAVE ANY ITEMS OF NON PERISHABLE FOOD IN YOUR CUPBOARDS OR COULD YOU PICK UP AN ITEM OR TWO WHEN SHOPPING?**

**WE ARE GATHERING DONATIONS FOR THE JUBILEE FOOD BANK BETWEEN NOW AND 19TH DECEMBER 2023.**

**THANK YOU IN ADVANCE.**

## CAREERS SUCCESS AT WPA

We're delighted to announce that Welland Park Academy has been awarded the Matrix accreditation for Careers Education Information and Guidance (CEIAG). The Matrix company works for the Department for Education and assesses schools against seven standards of excellent Careers provision. After a thorough two day inspection, we have passed the Matrix standard, which is a reflection of the hard work of all staff, local employers and parents who are involved in supporting our students in having a successful future in the world of work. Particular mention must go to Mrs Hix, who works tirelessly to ensure accurate and impartial Careers advice is given to all our students.

Instead of resting on our laurels, the Careers team moved on to deliver two mock interview days for Year 11. This saw a wide range of employers and members of the local community to come in and help prepare our students for college and job interviews. It was fantastic to see students so talkative and engaged with the process. Feedback from employers was very positive and we look forward to





At National Online Safety we believe in empowering parents, carers and trusted adults with the information they need to hold an informed conversation about online safety with their children, should they feel it is needed. This guide focuses on one issue of many which we believe trusted adults should be aware of. Please visit [www.nationalonlinesafety.com](http://www.nationalonlinesafety.com) for further guides, hints and tips for adults.

# ONLINE CONTENT

## 10 tips to keep your children safe online

The internet has transformed the ability to access content. Many apps that children use are dependent on user-generated content which can encourage freedom of expression, imagination and creativity. However, due to the sheer volume uploaded every day, it can be difficult for platforms to regulate and moderate everything, which means that disturbing or distressing images, videos or audio clips can slip through the net. That's why we've created this guide to provide parents and carers with some useful tips on keeping children safe online.



### 1 MONITOR VIEWING HABITS

Whilst most apps have moderation tools, inappropriate content can still slip through the net.



### 2 CHECK ONLINE CONTENT

Understand what's being shared or what seems to be 'trending' at the moment.



### 3 CHECK AGE-RATINGS

Make sure they are old enough to use the app and meet the recommended age-limit.



### 4 CHANGE PRIVACY SETTINGS

Make accounts private and set content filters and parental controls where possible.



### 5 SPEND TIME ON THE APP

Get used to how apps work, what content is available and what your child likes to watch.



### 6 LET CHILDREN KNOW YOU'RE THERE

Ensure they know that there is support and advice available to them if they need it.



### 7 ENCOURAGE CRITICAL THINKING

Talk about what people might post online and why some posts could cause distress.



### 8 LEARN HOW TO REPORT & BLOCK

Always make sure that children know how to use the reporting tools on social media apps.



### 9 KEEP AN OPEN DIALOGUE

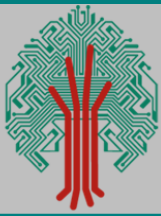
If a child sees distressing material online; listen to their concerns, empathise and offer reassurance.



### 10 SEEK FURTHER SUPPORT

If a child has been affected by something they've seen online, seek support from your school's safeguarding lead.





**ELFIS'S ANTICS THIS WEEK—HE WAS ON HOLIDAY ON MONDAY**

