

MESSAGE FROM THE PRINCIPAL

Dear Parents and Carers

As the end of term is rapidly approaching, I wanted to let you know the end of term arrangements and the plans for the start of the Spring Term in January.

Firstly, a reminder that Gold Students, those with fewer than 16 behavioural points can access their reward of non-uniform on **one** of the following days:

- Monday 18th December
- Wednesday 20th December
- Thursday 21st December

Tuesday has been excluded from the list above, as we have a couple of events happening on this day. Years 9,10 and 11 will be treated to a staff rendition of Charles Dickens' *A Christmas Carol*. I'm told this is normally performed by the year 11 students, but with fewer volunteers this year the staff have bravely stepped up to take on the ghostly roles. We are also taking Year 7 students to the Christingle service at St Dionysuis in the afternoon. I'm really looking forward to seeing and taking part in both events.

The last day of this Autumn Term is **Friday 22nd December 2023**. The school day will **finish at the earlier time of 12.25pm**, which is the end of period 3. Students will have an extended breaktime where they will be able to purchase selected hot food and other snacks. Please note that we will not be offering a lunchtime service on this day. Students who receive Free School Meals will be able to spend their allocated funds at the breaktime service. Students will be expected to leave site at 12.25pm, if this causes any issue and you would require your son or daughter to stay in school until 3.20pm, please contact the school to arrange this before Wednesday 20th December.

At the end of the Autumn Term, we say a sad and heartfelt goodbye to Mrs Moolraj who will be leaving to join a new school in Leicester City. She will be sorely missed by all students and staff, and we wish her well and the best of luck for the future.

The Spring Term will commence on **Monday 8th January 2024** at 8:40am for all students. Please note, there is not a January teacher training day this year, so all students are expected back on the same day, Monday 8th.

In January, we will be welcoming two new staff to the Welland Park Family, Miss Manners who will be joining the Humanities Department and Dr Blas, who will be joining us in Science, as a maternity cover for Miss Bogg who is now on leave. Unfortunately, this has meant that the two weeks before we finish for Christmas, the majority of Miss Bogg's timetable has been largely covered externally by supply staff or by WPA staff. As Miss Bogg was aware of this before her departure, she very kindly ensured that all of these lessons were properly planned and resourced. Therefore, consequently there may be some group changes in the new year in science, as we often do in subjects that use setting. It is unlikely to mean a change in exam tier entry at this stage, but if it does, we will be in touch separately.

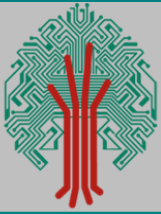
Finally, I would just like to thank you for your continued support in what has been an action-packed and exciting term. I hope that you have a lovely Christmas and a very Happy New Year.

I hope that you all have a fantastic weekend.

Yours faithfully

Pete Leatherland





Newsletter Issue 15

Each year we ask the students to design our Academy Christmas card. This year we had so many fantastic entries that we could not choose only 1. We decided to go for a selection pack and these are the winning designs. Thank you to everyone who entered and congratulations to the winners— Dylan Olivares-Alvarez, Eva Davies, Poppy Hadden, Sophie Votier and Olivia Gregory.





HOT CHOCOLATE BREAK BAR

EVERY TUESDAY
IN DECEMBER
10.05 - 10.20AM

£1 DRINK ONLY/£1.50 DRINK & SWEET TREAT
SERVED FROM THE BANDSTAND BY THE DINING HALL ENTRANCE

Made with PoshD&Well.com

FUNDRAISING—PROM 2024

Another good week for the Hot Chocolate Break Bar.

We will be back next Tuesday to do it all over again.

Due to demand we are going to carry this on for the first half of the Spring term.

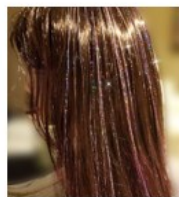
We are hopefully going to be announcing some big news in the next few weeks so please keep your eyes on the newsletter and social media!

Thank you to everyone who supports our fundraising . Prom 2024 will be here before we know it.

Nicki Burgess—Prom Chair



Add some Christmas
sparkle
with hair glitters



A £2 donation to Our Sensory Garden fundraiser is how much the glitters will cost

Come to learning support ELSA room during Lunchtimes between the 18th and 21st December for your sparkles! Staff and students welcome

A little about our Sensory garden vision:

The team in learning support and the school council are aiming to build a sensory garden at the back of learning support. Miss ~~Stacey~~ and a team of students have been working hard to tidy it up and make it look as pretty as we can with the resources we have. We are aiming to eventually have a sensory summerhouse out there and lots of other sensory areas within the garden (including colour, smell and touch this will be using different flowers, but also different texture materials). Our aim is to have the garden to be a peaceful and safe place for students to go to take time out and relax. The sensory summerhouse will also be used for ELSA sessions and interventions.

With the help of staff, ~~students~~ and parents we are hoping this vision can come to life.

If anyone has any plants, garden tools, wiggly or other garden things they would like to donate we will be happy to take them off your hands.

Welland Park Academy Dining Rooms Christmas Lunch

Tuesday 19th December – KS3
Wednesday 20th December – KS4
£4.00

Glazed Roast Turkey
Sage & Onion stuffing
Sticky Pigs
Roasties
Fresh vegetables & gravy
Or
Butternut & mushroom wellington

Xmas Pudding Rice Krispie ball for dessert

Welland Park Academy Learning For Life



Welland Park Academy Lunch & Deli Menu Week commencing 18th December 2023

Week 2	Monday	Tuesday	Wednesday	Thursday	Friday
Concept	English	Xmas Dinner – KS3	Xmas Dinner – KS4	American	Early finish
Option 1	Sausages	Glazed Roast Turkey	Glazed Roast Turkey	Chicken Nuggets	
Option 2	Veggie Bangers	Butternut & Mushroom Wellington	Butternut & Mushroom Wellington	Spicy Bean Burger	
Sides	Cheesy Chive Mash Peas	Sage & onion stuffing Sticky pigs Roasties Vegetable & gravy	Sage & onion stuffing Sticky pigs Roasties Vegetable & gravy	Chips Baked beans	
Authentic Italian	Authentic Italian Pizza and Pasta Bar				
Hot Deli	Cheese & Tomato Panini Jacket & Topping	Tuna Melt Panini Jacket & Topping	Cheese & Onion Panini Jacket & Topping	Roasted Veg Panini Jacket & Topping	



Welland Park Academy Lunch & Deli Menu Week commencing 8th January 2024

Week 1	Monday	Tuesday	Wednesday	Thursday	Friday
Concept	Authentic Italian	American	Best of British	Indian	Fun Friday
Option 1	Chicken Meatballs in Bharat Tomato Sauce	American Cheese Burger with Burger sauces	Roast Pork & Stuffing	Chicken Tikka Masala	Chicken Nuggets
Option 2	Vegetable Lasagne	Classic Mac n Cheese with Crispy Onions	Veggie Bangers	Butternut & Chickpea Passanda	Veggie Burger
Sides	Cous Cous Mixed Vegetables	Potato wedges Slaw	Roasties Honey Carrots	Wholegrain Rice Peas	Chips Beans
Authentic Italian	Authentic Italian Pizza and Pasta Bar				
Hot Deli	Cheese & Tomato Panini Jacket & Topping	Tuna Melt Panini Jacket & Topping	Cheese & Onion Panini Jacket & Topping	Roasted Veg Panini Jacket & Topping	Cheese Panini Jacket & Topping



Welland Park Academy PE

Welland Park Academy Results Summary

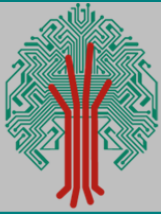
Fri 08 Dec 23 - Fri 15 Dec 23

Basketball						
Time/Date	Team	Venue	Opponent	Result	Type	Report
15:45 Tue 12 Dec 23	Boys-U12A	Home	Year 7 South Leicestershire Tournament	5 th Overall	Tournament	
16:00 Thu 14 Dec 23	Girls-U12A	Neutral	Year 7 South Leicestershire Tournament	3 rd Overall	Tournament	

Football						
Time/Date	Team	Venue	Opponent	Result	Type	Report
14:30 Wed 13 Dec 23	Boys-U13A	Away	Thomas Estley Community College	Lost : 2 - 7	Area Play Off	Goals: MENESES-CURRIE, HAYNES MVP(s) Josh COWEN

Rugby Union						
Time/Date	Team	Venue	Opponent	Result	Type	Report
14:30 Mon 11 Dec 23	Boys-U13A	Away	Oakham School Boys-U13B	Lost : 15-55	Friendly	
14:30 Mon 11 Dec 23	Boys-U12A	Away	Oakham School Boys-U12B	Won : 55-15	Friendly	

Sport	Team	Opposition	Venue	Teacher I/C	Meet Time	Start Time	Return/Finish Time
Tuesday 19 Dec 2023							
Basketball	Boys-U16A	Robert Smyth Academy	H	Miss C Gray	15:20	15:45	17:00
Basketball	Boys-U15A	Robert Smyth Academy	H	Miss C Gray	15:20	15:45	17:00
Thursday 21 Dec 2023							
Badminton	KS4 Boys	Lutterworth College	H	Mr Button	15:20	15:30	17:00
Badminton	KS4 Girls	Lutterworth College	H	Mrs Burdon	15:20	15:30	17:00
Badminton	KS3 Boys	Lutterworth College	H	Mr Button	15:20	15:30	17:00
Badminton	KS3 Girls	Lutterworth College	H	Mrs Burdon	15:20	15:30	17:00
							Teachers in charge*
Monday 18 Dec 2023							
	12:25-13:00	Badminton	KS3 and KS4 Girls		Sports Hall 1		Miss Gray*
	12:25-13:00	Badminton	KS3 Boys		Sports Hall 2		Mr Blades*
Tuesday 19 Dec 2023							
	12:25-13:00	Badminton	KS3 and KS4 Girls		Sports Hall 2		Miss Gray*
	12:25-13:00	Rugby Union	Boys-U14A		Field/Astro		Mr Button*
	15:20-16:15	Football	Boys-U13A		Field		Mr Woodward*
Wednesday 20 Dec 2023							
	12:25-13:00	Rugby Union	Boys-U13A		Field/Astro		Mr Button*
	12:25-13:00	Rugby Union	Boys-U12A		Field/Astro		Mr Button*
	15.20 - 16.30	Basketball	Boys-U13A		Sports Hall 2		Miss Gray*
Thursday 21 Dec 2023							
	12.25 - 13.00	Basketball	Boys-U14A		Sports Hall 2		Miss Gray*



STUDENTS ARE WORKING VERY HARD ON THIS PRODUCTION.

TICKETS WILL GO ON SALE FROM RESOURCES ON MONDAY 8TH JANUARY 2024

WPA PRESENTS

JAN 22-25

OCTAGONAL HALL

£7 ADULTS

£5 CONCESSIONS



Disney
**BEAUTY
AND THE
BEAST**

THE BROADWAY MUSICAL

©Disney

This amateur production is presented by arrangement with Music Theatre International.
All authorised performance materials are also supplied by MTI. www.mtishows.co.uk



At National Online Safety, we believe in empowering parents, carers and trusted adults with the information to hold an informed conversation about online safety with their children, should they feel it is needed. This guide focuses on one platform of many which we believe trusted adults should be aware of. Please visit www.nationalonlinesafety.com for further guides, hints and tips for adults.

What Parents & Carers Need to Know about

NETFLIX

Netflix is a subscription-based streaming service that allows users to watch TV shows and movies on any internet-enabled device that supports the software, such as smart TVs, phones and tablets. The pandemic saw a surge in children consuming on-demand content as many families relaxed their screen-time rules. Netflix's diverse range of programming caters for all age groups – so it's important for parents to recognise the potential risks of children using the service and the measures to help their child enjoy a safe streaming experience.

INAPPROPRIATE CONTENT

Netflix produces and curates an extensive catalogue of content that can provide hours of entertainment. If they share the same user account as an adult, this can potentially lead to children accidentally viewing all manner of inappropriate content, including nudity, profanity and extreme violence. This can happen easily on shared accounts, as Netflix cannot establish who's watching.

BINGE-WATCHING

Netflix allows users to view shows and movies quickly and easily without adverts or interruptions, making excessive screen time a concern. Binge-watching has become more common during the pandemic, due to Netflix's regularly updated content and algorithms which recommend content very similar to what's previously been enjoyed. Marathon viewing sessions can lead to children staying up too late, affecting their mood and concentration the next day.

SCREEN ADDICTION

From TVs and phones to consoles and tablets, Netflix is available on almost any device with an internet connection – making it extremely difficult to manage children's screen time. The service is now adding games to its mobile app, tempting users to spend even more time on the platform. Screen addiction can distract children from important activities like schoolwork and socialising, and can impact their health by reducing their exercise and sleep.

HACKING ATTEMPTS

With millions of users worldwide, Netflix is often targeted by hackers who try to steal usernames and passwords to gain access to people's accounts. If successful, they can then steal payment details or try to sell stolen personal data on the dark web, providing other criminals with a profitable opportunity. Netflix also doesn't provide two-factor authentication, making the hackers' task that little bit easier.

CONTACT FROM STRANGERS

Netflix's Teleparty feature became popular during lockdown periods as it allows users from different households (friends and relatives, for example) to synchronise when they watch content. It requires an access link to be sent to the people you wish to invite; the link, however, can also be distributed to people you don't know. A text chat feature enables interaction with the other users in real-time; this represents a risk to children if a stranger gains access to the Teleparty.

Advice for Parents & Carers

KEEP ACCOUNTS SECURE

Netflix doesn't use two-factor authentication, so a strong password is vital. Your child's Netflix password should be unique (not one they've used elsewhere) and a minimum of eight characters with a mix of letters, numbers and symbols. Emphasise not to share their login details with anyone and remind them to always log out after using the app – so their account remains inaccessible, even if their device is lost or stolen.

CHECK MATURITY RATING

Netflix warns about content that includes violence, sex, profanity and nudity. These warnings form part of the show or movie's 'maturity rating'. Users can restrict age ratings to avoid children viewing age-inappropriate content. On their profile, open the Profile and Parental Control settings and choose the maturity level for the shows and movies you want to allow.



CREATE A KIDS' PROFILE

Setting up a Netflix Kids experience profile means your child can only access content which is suitable for children aged up to 12 years. All other content is automatically blocked. This rating can be further restricted via the child's profile settings. Setting up a Netflix Kids experience profile will help to prevent your child from viewing age-inappropriate content.



SET UP PROFILE PINS

Netflix account holders can lock profiles using a four-digit PIN. Doing this can prevent your child from accessing the wrong account and viewing content that isn't appropriate for their age. Try setting a PIN for each account on your Netflix app – ideally avoiding numbers that would be easily guessed, such as dates of birth. Remember not to share these PINs with anyone, including family.

SWITCH OFF AUTO-PLAY

When a show or movie concludes, Netflix's algorithms select content with similar themes that it thinks your child will enjoy next. This new content starts automatically after a 10-second countdown. Disabling this auto-play feature reduces the possibility of your child being shown something inappropriate and provides a natural break to help prevent them becoming too immersed in Netflix.

CHECK VIEWING HABITS

Netflix has tools which enable parents and carers to monitor what their child has been watching. Selecting 'Viewing Activity' in each profile's account settings displays a list of what content has been viewed (and when). This can reassure parents that their child is watching age-appropriate content and can open avenues for discussing your child's favourite shows and movies, and why they like them.



Meet Our Expert

Dr Claire Sutherland is an online safety consultant, educator and researcher who has developed and implemented anti-bullying and cyber safety policies for schools. She has written various academic papers and carried out research for the Australian government comparing internet use and sexting behaviour of young people in the UK, USA and Australia.



National Online Safety®

#WakeUpWednesday

Sources: www.help.netflix.com | www.about.netflix.com | www.bbc.com/news



www.nationalonlinesafety.com



@natonlinesafety

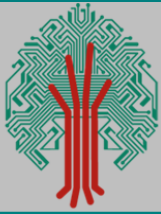


/NationalOnlineSafety



@nationalonlinesafety

Users of this guide do so at their own discretion. No liability is entered into. Current as of the date of release: 10.11.2021



ELFIS'S ANTICS THIS WEEK

