

MESSAGE FROM THE PRINCIPAL

Dear Parents and Carers

The cold snap has finally come as we move into December, making the site seem very festive as it glistens with the frost. After today, there are only three weeks left of this term, so just to remind you we finish on Friday 22nd December, at the earlier time of 12.25pm. The day will be designated a non-uniform day and although we are not collecting any money for charity, the same dress code rules will apply. I shall be writing to you with specific details nearer the time, like our plans to have an extended breaktime so students wanting to get hot food on the day can do so.

This week has been very special and reminds me of exactly why I went into teaching. We were delighted to see Mrs Gerald receive her award in London on Saturday, for French Teacher of the Year from the Institut Francais. This is a fitting testament to Mrs Gerald who is a fantastic MFL teacher and a superb senior leader at the school. As she tells me often, she's taught here for a very long time, having taught parents and grandparents of our current students. Her dedication to the profession, which is getting a lot of bad press at the moment, and her dedication to the students at this school is nothing short of incredible. She managed to achieve the best results in the school with last year's GCSE cohort in French, and she continues to be an outstanding member of staff. I am sure that you will join me, and the rest of the school in congratulating her on this well-earned success. Félicitations Madame Gerald!

In addition to the fabulous news about Mrs Gerald, I had the absolute pleasure to attend my first Welland Park Concert last night in our Octagonal Hall. The talent on show was absolutely amazing, and our students totally blew the audience away. We had singers, pianists, a saxophonist and other superb instrumentalists. The standard was exceptionally high, showing the dedication of the students and the staff. I would like to thank the student lighting team for their great work, in addition to Mrs Towers and Mr Oakland for going above and beyond as usual for our students. Without their time and efforts this would not have been possible.

The staff's dedication here at Welland Park Academy, goes well beyond the classroom, which is why I believe this school to be a fantastic place to work. Mr Towers, our Finance and Operations Director, in conjunction with our PE dept. managed to secure funding for a number of our youngsters who either cannot swim, or those who have a very low ability with swimming. I am delighted to say that the first students went this week and had an absolute blast! For some, this was a very daunting and scary experience, as water terrifies them. However, they all did really well and we are hoping to encourage those who couldn't quite manage it this week, to try next week. I look forward to hearing how they progress.

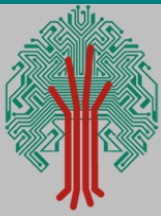
Finally, I would just like to remind parents as we approach the festive season, if you are looking for last minute stocking filler, please bear in mind students need the following equipment for school: A pencil case, reading book, calculator, pens, pencils, ruler, eraser, pencil sharpener and a green pen as a bare minimum. This means that they are well prepared for lessons and can maximise their learning.

I hope that you all have a fantastic weekend.

Yours faithfully

Pete Leatherland





FUNDRAISING—PROM 2024



**HOT CHOCOLATE
BREAK BAR**

**EVERY TUESDAY
IN DECEMBER
10.05 - 10.20AM**

£1 DRINK ONLY/£1.50 DRINK & SWEET TREAT
SERVED FROM THE BANDSTAND BY THE DINING HALL ENTRANCE

The Octagonal Hall was full to capacity on Monday of this week with students from across all year groups ready to watch Year 10 and 11 students battle it out in the Sumo Wrestling Tournament. The final battle between 'Blagon' and 'Dave' was very close and, depending on who you talk to, depends on who the winner was. Thank to everyone who supported the event—wrestlers, spectators and staff. It was great fun!

Wednesday saw the return of our annual Christmas Shopping Evening. Over 20 stalls set up selling every thing from printed baby vests to everlasting chilli oil. It was a busy couple of hours to kick start the festive period.

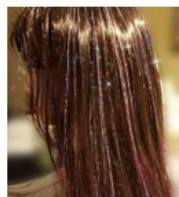
Our next fundraising event starts on Tuesday. We will be selling hot chocolate at morning break times in the playground. A tasty way to warm up during this cold snap—we could definitely have done with it today! Remember to bring your money.

Thank you to everyone who supports our fundraising . Prom 2024 will be here before we know it.

Nicki Burgess—Prom Chair



**Add some Christmas
sparkle
with hair glitters**



*Come to learning support
ELSA room during
Lunchtimes between the
18th and 21st December for
your sparkles! Staff and
students welcome*

A little about our Sensory garden vision:

The team in learning support and the school council are aiming to build a sensory garden at the back of learning support. Miss Sikora and a team of students have been working hard to tidy it up and make it look as pretty as we can with the resources we have. We are aiming to eventually have a sensory summerhouse out there and lots of other sensory areas within the garden (including colour, smell and touch) this will be using different flowers, but also different texture materials. Our aim is to have the garden to be a peaceful and safe place for students to go to take time out and regulate. The sensory summerhouse will also be used for ELSA sessions and interventions.

With the help of staff, students and parents we are hoping this vision can come to life.

If anyone has any plants, garden tools, wood or other garden things they would like to donate we will be happy to take them off your hands.

**WELLAND PARK ACADEMY
REVERSE ADVENT EVENT
THE TWELVE DAYS OF CHRISTMAS**

Reverse Advent sees us giving something, rather than receiving something, through the days of December.

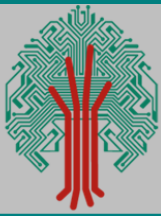
This year we are asking for any donations of food and health products which we can then collect and pass onto the Jubilee Foodbank to help them over the Christmas holidays.

We will begin collecting on Monday 4th December and then for the next twelve school days.

Anything you can give, will be gratefully received and passed on but this is a suggested list of requests:

- MONDAY 4TH DECEMBER - DRIED POTATO (EG SMASH)**
- TUESDAY 5TH DECEMBER - TINNED CUSTARD**
- WEDNESDAY 6TH DECEMBER - TINNED POTATOES OR CARROTS**
- THURSDAY 7TH DECEMBER - BOX OF CEREAL**
- FRIDAY 8TH DECEMBER - JAR OF CURRY SAUCE**
- MONDAY 11TH DECEMBER - PACKET OF BISCUITS**
- TUESDAY 12TH DECEMBER - BOTTLE OF CORDIAL / SQUASH**
- WEDNESDAY 13TH DECEMBER - PACKET OF RICE**
- THURSDAY 14TH DECEMBER - CHOCOLATE BARS**
- FRIDAY 15TH DECEMBER - SHOWER GEL**
- MONDAY 18TH DECEMBER - PORRIDGE OATS**
- TUESDAY 19TH DECEMBER - TINNED FRUIT**

For further details of suggested food donations, please visit the Jubilee Food Bank website at <https://www.jubileefoodbankmh.uk/shopping-list>



Welland Park Academy Lunch & Deli Menu Week commencing 4th December 2023					
Week 3	Monday	Tuesday	Wednesday	Thursday	Friday
Concept	Italian	Tex Mex	Best of British	India	Fab Friday
Option 1	Meatballs in fresh tomato sauce	BBQ Chicken Wings (or wrap)	Chicken & Leek Pie	Bengali Pork Shoulder	Hot Dog & Onions
Option 2	Caprese Bruschetta	Chipotle Sweet Potato & Lime Taco	Cheese Slice	Cauliflower & Chickpea Korma	Beetroot & Feta Burger
Sides	Cous cous Green Salad	Garlic & Herb Wedges Tangy Slaw	Roasties Broccoli	Wholegrain Rice Coconut Green Beans	Chips & Beans
Authentic Italian	Authentic Italian Pizza and Pasta Bar				
Hot Deli	Cheese & Tomato Panini Jacket & Topping	Tuna Melt Panini Jacket & Topping	Cheese & Onion Panini Jacket & Topping	Roasted Veg Panini Jacket & Topping	Cheese Panini Jacket & Topping

SWIMMING LESSONS

Delighted to say, Welland Park Academy Market Harborough has been blessed with funding from Active Together with Nada Hankin & Geoff Maltby through Opening Schools Facilities Fund.

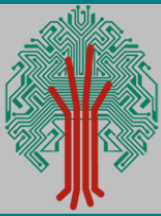
With this funding we have struck up a partnership with Harborough Leisure Centre to get students who cannot swim the opportunity to learn a vital life skill through local provision.

Today was the first day of many where students went to their local leisure centre and participated in funded swimming lessons!!!



Really hoping this starts to grow legs and other students grab the opportunity with both hands....

Martin Towers—
Director of Finance and Operations



Welland Park Academy PE

Sport	Team	Opposition	Venue	Teacher I/C	Transport	Meet Time	Start Time	Return Time
Monday 04 Dec 2023								
Basketball	Boys-U13A	Robert Smyth Academy	H	Miss C Gray		15:20	16:35	17:00
Basketball	Boys-U13A	Lincroft Academy	H	Miss C Gray		15:20	16:10	17:00
Basketball	Boys-U13A	Brook Mead Academy	H	Miss C Gray		15:20	15:45	17:00
Tuesday 05 Dec 2023								
Basketball	Boys-U14A	Thomas Estley Community College	H	Miss C Gray		15:20	15:45	17:00
Basketball	Boys-U14A	Brockington College	H	Miss C Gray		15:20	15:45	17:00
Hockey	Girls-U15A	Bourne Academy	H	Mrs Burdon		15:20	15:45	17:00
Hockey	Girls-U13A	Bourne Academy	H	Mrs Burdon		15:20	15:45	17:00
Rugby Union	Boys-U16A	Oakham School Boys-U16B	A	Mr Button	Minibus	13:15	14:30	16:45
Wednesday 06 Dec 2023								
Basketball	Boys-U16A	The Kibworth School	H	Miss C Gray		15:20	15:45	17:00
Basketball	Boys-U15A	The Kibworth School	H	Miss C Gray		15:20	15:45	17:00
Football	Boys-U12A	Lutterworth High School	N	Mr Blades	Walking to Ground	13:40	14:45	16:15
Rugby Union	Boys-U13A	Leicester Grammar School Trust	N	Mr Button	Walking to Ground	13:15	14:30	16:15
Thursday 07 Dec 2023								
Basketball	Girls-U13A	Year 8 South Leicestershire Tournament	N	Miss C Gray		15:00	16:00	18:00
Rugby Union	Boys-U14A	Leicester Grammar School Trust	A	Mr Button	Minibus	13:15	14:45	16:45
Friday 08 Dec 2023								
Basketball	Boys-U14A	Loughborough Grammar School Boys-U13A	H	Miss C Gray		15:10	15:30	16:45

	Location	Teachers in charge*
Monday 04 Dec 2023		
12:25-13:00	Badminton	KS3 Boys
12:30-13:00	Basketball	Boys-U14A
12:30-13:00	Basketball	Boys-U13A
15:20-16:20	Football	Girls-U14A
Tuesday 05 Dec 2023		
12:25-13:00	Rugby Union	Boys-U12A
12:25-13:00	Table Tennis	U16 Table Tennis
12:25-13:00	Table Tennis	U13 Table Tennis
12:30-13:00	Basketball	Girls-U16A
12:30-13:00	Basketball	Girls-U15A
15:20-16:15	Football	Boys-U13A
Wednesday 06 Dec 2023		
12:30-13:00	Basketball	Girls-U14A
12:30-13:00	Basketball	Girls-U13A
15:20-16:20	Football	Girls-U12A
Thursday 07 Dec 2023		
12:25-13:00	Badminton	KS4 Boys
12:30-13:00	Badminton	Girls-U14A
15:25-16:30	Hockey	Girls-U14A
15:25-16:30	Hockey	Girls-U13A
Friday 08 Dec 2023		
12:30-13:00	Basketball	Boys-U12A
12:30-13:00	Basketball	Girls-U12A
12:30-13:00	Badminton	Girls-U16A
15:25-16:30	Hockey	Girls-U16A
15:25-16:30	Hockey	Girls-U15A

Netball						
Time/Date	Team	Venue	Opponent	Result	Type	Report
14:15 Wed 29 Nov 23	Girls-U15A	Home	Robert Smyth Academy	Lost - 5 - 15	League	MVP(s) Mia KIRKE Lily PARRISH
15:30 Wed 29 Nov 23	Girls-U13A	Away	Lutterworth High School	Won - 12 - 3	League	MVP(s) Willow FREER Harriet STOCKWELL
Rugby Union						
Time/Date	Team	Venue	Opponent	Result	Type	Report
14:45 Wed 29 Nov 23	Boys-U13A	Away	Bishop Stopford School	Lost - 10 - 50	Friendly	Tries: RUSLING(2) MVP(s) Euan MCGOWAN
14:45 Wed 29 Nov 23	Boys-U12A	Away	Bishop Stopford School	Draw - 15 - 15	Friendly	Tries: CLARKE, EVANS, SPENCER MVP(s) Leon AITKEN Leo CLARKE

Basketball						
Time/Date	Team	Venue	Opponent	Result	Type	Report
15:45 Tue 28 Nov 23	Boys-U14A	Away	The Kibworth School	Lost - 13 - 16	League	
15:45 Tue 28 Nov 23	Boys-U13A	Away	The Kibworth School	Won	League	
15:45 Thu 30 Nov 23	Girls-U16A	Home	Year 10/11 South Leicestershire Basketball Tournament	Won	Tournament	
Football						
Time/Date	Team	Venue	Opponent	Result	Type	Report
14:45 Thu 30 Nov 23	Boys-U15A	Away	Brooke House College	Lost - 0 - 5	League	MVP(s) Ethan MERCER
14:45 Thu 30 Nov 23	Boys-U14A	Neutral	Brooke House College	Lost - 2 - 8	League	Goals: TAYLOR(2) MVP(s) Joseph TAYLOR



At National Online Safety, we believe in empowering parents, carers and trusted adults with the information to hold an informed conversation about online safety with their children, should they feel it is needed. This guide focuses on one of many apps which we believe trusted adults should be aware of. Please visit www.nationalonlinesafety.com for further guides, hints and tips for adults.

What Parents & Carers Need to Know about

SNAPCHAT

AGE RESTRICTION
13+



WHAT ARE THE RISKS?

Snapchat is an instant messaging app which allows users to send images, videos and texts to people in their friends list. One of Snapchat's unique features is that pictures and messages 'disappear' 24 hours after they've been viewed; however, this content isn't as temporary as many believe - with some users saving screenshots or using another device to take a photo of their screen. This year, Snapchat added 'My AI': a customisable chatbot with which people can chat and share secrets, as well as asking for advice and suggestions of places to visit.

CONNECTING WITH STRANGERS

Even if your child only connects with people they know, they may still get friend requests from strangers. The Quick Add option lets users befriend people the app recommends - but these 'friends' are merely a username, which could have anyone behind it. Accepting such requests reveals children's personal information through the Story, SnapMap and Spotlight features, potentially putting them at risk from predators.

EXCESSIVE USE

Snapchat works hard on user engagement, with features like streaks (messaging the same person every day to build up a high score). Spotlight Challenges tempt users into spending time producing content in search of cash prizes and online fame, while it's easy for children to pass hours watching Spotlight's endless scroll of videos.

INAPPROPRIATE CONTENT

Some videos and posts on Snapchat aren't suitable for children. The hashtags used to group content are determined by the poster, so even an innocent search term could still yield age-inappropriate results. The app's 'disappearing messages' feature also makes it easy for young people (teens in particular) to share explicit images on impulse - so sexting continues to be a risk associated with Snapchat.



#NOFILTER

ARTIFICIAL INTELLIGENCE

My AI is Snapchat's new chatbot, which replies to questions in a human-like manner. However, the software is still in its infancy and has significant drawbacks, such as biased, incorrect or misleading responses. There have already been numerous reports of young users turning to AI for medical help and diagnoses, which could be inaccurate and therefore potentially dangerous.

ONLINE PRESSURES

Although many of Snapchat's filters are designed to entertain or amuse, the 'beauty' effects on photos can set unrealistic body-image expectations - creating feelings of inadequacy if a young person compares themselves unfavourably with other users. Snapchat now also has 'priority' notifications (which still get displayed even if a device is in 'do not disturb' mode), increasing the pressure on users to log back in and interact.

VISIBLE LOCATION

Snap Map highlights a device's exact position on a virtual map which is visible to other users. There are options to restrict who can see this information: all friends, only you (Ghost Mode) or selected friends. Snapchat also has real-time location sharing, which is intended as a buddy system to ensure friends have reached home safely - but which could also be used to track a young person for more sinister reasons.

Advice for Parents & Carers

TURN OFF QUICK ADD

The Quick Add feature helps people find each other on the app. This function works based on mutual friends or whether someone's number is in your child's contacts list. Explain to your child that this could potentially make their profile visible to strangers. We recommend that your child turns off Quick Add, which can be done in the settings (accessed via the cog icon).



CHOOSE GOOD CONNECTIONS

In 2021, Snapchat rolled out a new safety feature: users can now receive notifications reminding them of the importance of maintaining connections with people they actually know well, as opposed to strangers. This 'Friend Check Up' encourages users to delete connections with users that they rarely communicate with, to maintain their online safety and privacy.



DISCUSS AI

Although My AI's responses can often give the Impression that it's a real person, it's essential that young people remember this certainly isn't the case. Encourage your child to think critically about My AI's replies to their questions: are they accurate and reliable? Remind them that My AI shouldn't replace chatting with their real friends, and that it's always better to talk to an actual person in relation to medical matters.



CHAT ABOUT CONTENT

It may feel like an awkward conversation (and one that young people can be reluctant to have) but it's important to talk openly and non-judgementally about sexting. Remind your child that once something's online, the creator loses control over where it ends up - and who else sees it. Likewise, it's vital that children understand that some challenges which become popular on the platform may have potentially harmful consequences.



KEEP ACCOUNTS PRIVATE

Profiles are private by default, but children may make them public to gain more followers. Snap Stories are visible to everyone your child adds, unless they change the settings. On SnapMaps, their location is visible unless Ghost Mode is enabled (again via settings). It's safest not to add people your child doesn't know in real life - especially since the addition of My Places, which allows other Snapchat users to see where your child regularly visits and checks in.



BE READY TO BLOCK AND REPORT

If a stranger *does* connect with your child on Snapchat and begins to make them feel uncomfortable through bullying, pressure to send explicit images or by sending sexual images to them, your child can select the three dots on that person's profile and report or block them. There are options to state why they're reporting that user (annoying or malicious messages, spam, or masquerading as someone else, for example).



Meet Our Expert

Dr Claire Sutherland is an online safety consultant, educator and researcher who has developed and implemented anti-bullying and cyber safety policies for schools. She has written various academic papers and carried out research for the Australian government comparing internet use and sexting behaviour of young people in the UK, USA and Australia.



National Online Safety®
#WakeUpWednesday

Sources: <https://help.snapchat.com/hc/en-gb/articles/202078026682-What-is-My-AI-on-Snapchat-and-how-do-I-use-it> | <https://help.snapchat.com/hc/en-gb/articles/202078026682-What-is-My-AI-on-Snapchat-and-how-do-I-use-it> | <https://help.snapchat.com/hc/en-gb/articles/202078026682-What-is-My-AI-on-Snapchat-and-how-do-I-use-it>



@natonlinesafety



/NationalOnlineSafety

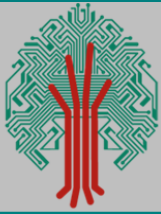


@nationalonlinesafety



@national_online_safety

Users of this guide do so at their own discretion. No liability is entered into. Current as of the date of release: 17.05.2023



ELFIS HAS RETURNED TO THE FRONT OFFICE

