



Welland Park
Academy
Learning For Life

Staff Directory 2023/24

Governors & Key Personnel

Motto:

Learning for Life.

Our Mission Statement:

Working together to provide the highest quality education for each student, through our commitment to continuous improvement.

Welland Park
Academy

An 11 - 16 Community College

Tel: 01858 464 795 | www.wellandparkacademy.co.uk



Learning for Life

Welcome



Welland Park
Academy

Learning For Life



Claire Parry
Chair of Governors
Financial Oversight & Strategy



Richard Chester
Vice Chair of Governors
SEND



Dr Amy Atkinson
Literacy & Numeracy & Attendance



Nicki Burgess
Clerk
Teaching & Learning



Kathy Dare
Child Protection/Safeguarding



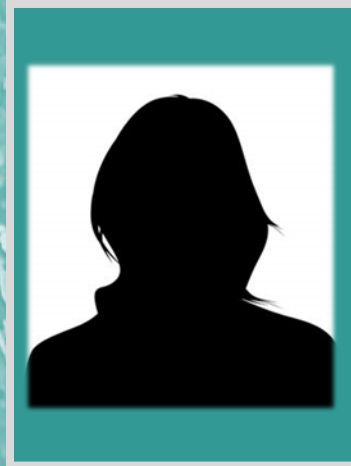
Simone Harrison
Co-opted Governor



Dr Nichola Harcombe
More Able Students



Neil Heath
Health & Safety



Susie Munton
Health & Safety



Stephen Peverett
GDPR/Data Monitor



Hannah Russell
Staff Governor
Parental Engagement, Smisc & British Values



Kathryn Swinglehurst
Staff & Student Welfare



David Page
Parent Governor

Welland Park
Academy
An 11 - 16 Community College

Tel: 01858 464 795 | www.wellandparkacademy.co.uk

Welcome



Jim Harker
Member



Dave Hedley
Member



Deborah Edwards
Member



Julie Oakley
Member



Julian Oakland
Staff/Governor



Jane Theobald
Member



Elaine Winn
Clerk



SENIOR LEADERSHIP & PROFESSIONAL BODIES



Pete Leatherland
Principal



Matt Jerred
Vice Principal



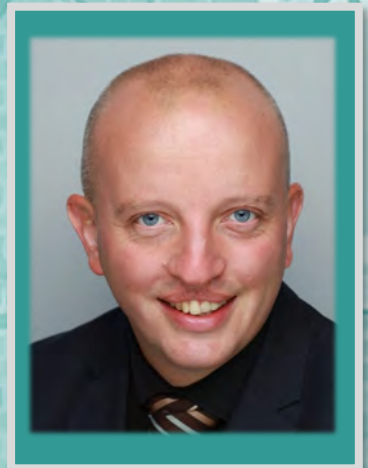
Caroline Bowden
Asst Principal/Teaching &
Learning



Cheryl Gerald
Assistant Principal/Staff &
Student Wellbeing



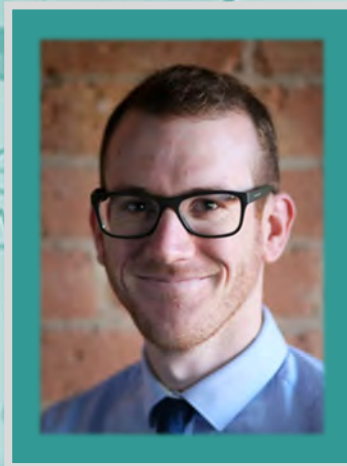
Danielle Pendell
Asst. Principal /Inclusion



Martin Towers
Director of Finance & Ops.



Mark Mitchley
S.I.P.



Sean Douglass
Auditor (External)



Wayne Thomas
Auditor (External)